

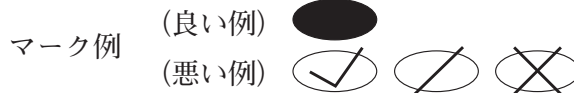
令和6年度（令和5年度実施）
高知県公立学校教員採用候補者選考審査
筆記審査（専門教養）

中学校 高等学校 特別支援学校 中学部・高等部
英語

受審番号		氏 名	
------	--	-----	--

【注意事項】

- 1 審査開始の合図があるまで、この問題冊子の中を見ないでください。
- 2 解答用紙（マークシート）は2枚あります。切り離さないでください。
- 3 解答用紙（マークシート）は、2枚それぞれに下記に従って記入してください。
○ 記入は、HBの鉛筆を使用し、該当する○の枠からはみ出さないよう丁寧にマークしてください。



- 訂正する場合は、消しゴムで完全に消してください。
- 氏名、受審する教科・科目、受審種別、受審番号を、該当する欄に記入してください。

また、併せて、右の例に従って、受審番号をマークしてください。

受 審 番 号				
万	千	百	十	一
1	2	3	4	5
○	○	○	○	○
●	○	○	○	○
○	●	○	○	○
○	○	●	○	○
○	○	○	●	○
○	○	○	○	●

記入例

(受審番号12345の場合)

- 4 この問題は、【共通問題】、及び【選択問題 中学校・高等学校】、【選択問題 特別支援学校】の各問題から構成されています。選択問題で受審種別以外の問題を選択して解答した場合、解答は全て無効となります。
- 5 解答は、解答用紙（マークシート）の解答欄をマークしてください。例えば、解答記号 ア と表示のある問いに対してbと解答する場合は、下の（例）のようにアの解答欄の○bをマークしてください。

(例)

ア	a	●	c	d	e	0	1	2	3	4	5	6	7	8	9	.	-	±
---	---	---	---	---	---	---	---	---	---	---	---	---	---	---	---	---	---	---

なお、一つの解答欄に対して、二つ以上マークしないでください。

- 6 筆記審査（専門教養）が終了した後、解答用紙（マークシート）のみ回収します。監督者から指示があれば、この問題冊子を、各自、持ち帰ってください。



【共通問題】

第1問

Section 1 Listening Comprehension

Listen to the four statements and choose one statement that best describes the picture.

(1)

a b c d

(2)

a b c d

21の2

(3)

a b c d

(4)

a b c d

Section 2 Listening Comprehension

Listen to the four conversations and answer the questions.

- (1) When will the woman probably attend the workshop?
- a On Monday.
 - b On Tuesday.
 - c On Thursday.
 - d On Friday.
- (2) What is implied in this conversation?
- a The cafeteria asked the woman to find why the cafeteria was crowded.
 - b The woman went to the cafeteria, so she was almost late.
 - c The woman has written a report about why the cafeteria is always busy.
 - d The man and the woman's research topic for a class is about the cafeteria.
- (3) Where is the woman most likely to transfer?
- a At Wimbledon Station.
 - b At Southfields Underground Station.
 - c At Boston Manor Underground Station.
 - d At Brentford Station.
- (4) Which statement is true about the conversation?
- a The woman plans to go to the beach tomorrow without taking anything.
 - b The man will be swamped with things to do tomorrow.
 - c The woman has to get up at 6 a.m. tomorrow to go to the beach.
 - d The man is in charge of some important projects at work.

Section 3 Listening Comprehension

Listen to the three short passages and answer the questions.

(1)

- ① Which reason is NOT mentioned in the passage?
- a To interact with people of various nationalities.
 - b To acquire a multifaceted view of things.
 - c To become a more mature and self-reliant person.
 - d To improve your language proficiency.

- ② Which of the following matches the passage?

- a Teachers and students treat each other like friends in the U.S.
- b You should discuss money with your parents when studying abroad.
- c Japanese people tend to get together with other Japanese people when studying abroad.
- d You have to handle a lot of things on your own when studying abroad.

(2)

- ① Why was the first modern TV remote control invented?

- a Because one company president wanted to make money from the patent.
- b Because one company president did not want to get out of bed to change channels.
- c Because one company president wanted to reproduce the idea he had come up with.
- d Because one company president did not want to watch TV commercials.

- ② Which of the following matches the passage?

- a The first remote control was created following the invention of the television.
- b The first television was made in the U.S. before Japan in the 1900s.
- c The first remote control was invented prior to the invention of the television.
- d The first modern television appeared in Serbia in the 1800s.

(3)

① What is the passage mainly about?

- a The coral polyps and the dangers they face.
- b The coral polyps and a variety of life around the reefs.
- c The reefs and their direct contribution to Egyptian culture.
- d The reefs and how they are created.

② Which of the following does NOT match the passage?

- a Coral polyps are sometimes said to have helped make the world.
- b Coral reefs are bigger than any building in the human world.
- c Coral reefs are shaped in a fixed and constant pattern.
- d Coral polyps are a source of limestone in the ocean.

第2問

1 Directions: In this section, (1) to (10), there are incomplete sentences. Beneath each sentence you will see four words or phrases, marked a to d. Choose one word or phrase for ~ that best completes the sentence. Then, mark your answer on your answer sheet.

(1) One of the most popular ways for an adult to try to keep fit is to join a fitness club. Such a club usually offers a variety of training equipment and .

- a ingredients b candidates c facilities d opponents

(2) We have a skeleton so many bones. These include the bones of the skull, spine, ribs, arms and legs.

- a made up b making up c made up of d making up of

(3) Subscription services are popular these days. There are many good points about subscriptions: they are convenient, we can a lot of content, and the cost is reasonable.

- a access b access to
c be accessible d be accession to

(4) An element is a simple substance that you cannot smaller chemical parts. One such element is hydrogen.

- a reduce b reduce from c reduce by d reduce to

(5) It has been known for a long time that spending time with animals makes humans happy. There is also increasing evidence that having an animal around can have health effects, such as lowering blood pressure or the risk of heart disease.

- a controversial b beneficial c irrational d vocational

(6) The changing colors of the sun and the moon are their positions relative to the earth. The lower the sun is above the horizon, the longer the sunlight passes through the atmosphere.

- a because b despite c even if d due to

(7) One phenomenon of the modern world is the ease people can travel from one country to another. This is demonstrated by the increasing number of Japanese students going abroad.

- a with that b of which c with which d what

(8) Water exists not only on the Earth. The solar system is also with water.

- a abundant b compatible c accordance d consistent

(9) has a nice pair of earphones these days. However, although the technology is excellent, sometimes earphones give us problems.

- a Almost all people b Almost everybody
c Almost people d Almost each person

(10) The Marathon is a very popular running event. It was started to the feat of a Greek man who ran from the city of Marathon to Athens with news of the Greek victory over the Persians at Marathon.

- a emigrate b alleviate c humiliate d commemorate

2 Directions: In this section, you will read two passages. There are five blanks in each passage. Beneath each passage you will see five choices, marked a to e. Choose one for each blank that best completes the sentences, and mark the second and fourth elements ~ on your answer sheet.

(1)

- a looked to you
- b more interesting
- c if you could
- d how much
- e it would have

(2)

- a where all products
- b an economy
- c such as metal, plastic, and fabric
- d minimum additional new resources
- e are recycled with

- 3 Directions: In this section, you will read two passages. There is a blank in each passage. Beneath each passage, you will see three sentences, marked 1, 2, and 3. Choose the order of the sentences for the blank that best completes each passage. Then, mark your answer on your answer sheet.

(1)

- 1 There are 24 “working languages” in the European Union, or EU.
- 2 ASEAN adopted English as its working language in 2009.
- 3 Of these, English is the most commonly used, with 51% of the EU’s citizens being native or second-language English speakers.

a 1—2—3 b 1—3—2 c 2—3—1 d 3—2—1

(2)

- 1 However, according to Professors Anil Seth and Alan Winfield, there are two things humans are far better at: predicting the future and behaving ethically.
- 2 Machines already outperform humans not only in highly complex calculations, but also in detecting patterns from large volumes of data.
- 3 Seth, who specializes in cognitive and computational neuroscience, explains that what is core to human intelligence is the ability to perceive the world and make decisions with common sense.

a 1—3—2 b 2—1—3 c 3—1—2 d 3—2—1

第3問

Directions: There are blanks in the following definitions of technical terms in language teaching. Beneath each definition you will see four words or phrases, marked a to d. Choose one word or phrase for ~ that best completes the definition. Then, mark your answer on your answer sheet.

(1) is the total number of words a person understands, either in reading or listening.

- | | |
|-------------------------|------------------------|
| a Sight vocabulary | b Receptive vocabulary |
| c Productive vocabulary | d Academic vocabulary |

(2) is, in testing, the positive or negative impact of a test on classroom teaching or learning. In some countries, for example, national language examinations have a major impact on teaching and teachers often “teach to the tests”. In order to bring about changes in teaching, changes may have to be made in the tests.

- | | | | |
|------------|------------|------------|--------------|
| a Washback | b Transfer | c Feedback | d Reflection |
|------------|------------|------------|--------------|

(3) is a method that integrates language instruction with subject matter instruction in the target language, for example, studying science, social studies or mathematics through the medium of English.

- | | |
|--------------------------------|-----------------------------|
| a Audiolingual method | b Content-based instruction |
| c Task-based language teaching | d Usage-based learning |

(4) is, in conversation, what speakers do in order to achieve successful communication. For example, to make successful conversation, it may be necessary for speakers to indicate that they understand or do not understand, or that they want the conversation to continue.

- | | | | |
|----------|-------------|----------|---------------|
| a Output | b Dictation | c Recast | d Negotiation |
|----------|-------------|----------|---------------|

(5) is a process common in both first- and second-language learning, in which a learner extends the use of a grammatical rule of a linguistic item beyond its accepted uses, generally by making words or structures follow a more regular pattern.

- | | |
|----------------------|------------------------------|
| a Fossilization | b Cross-linguistic influence |
| c Overgeneralization | d Interlanguage |

第4問

- 1 Directions: You will read two passages. Each passage is followed by an incomplete statement and four options, marked a to d. Choose the best answer for · on the basis of what is stated or implied in the passages. Then, mark your answer on your answer sheet.

(1)

This passage claims that a certain type of bird .

- a will be able to comprehend human language
- b has an innate habit of fleeing predators
- c can understand some “words” of other species
- d is born knowing the “languages” of other species

(2)

According to this passage, .

- a several studies have revealed the impact of ultra-processed foods on our health
- b people are eating less and less ultra-processed foods because of health risks
- c the production of ultra-processed foods is restricted in several countries
- d the relationship between obesity and ultra-processed foods remains unclear

2 Directions: You will read the following passages, one with a table and one with a figure. Beneath them, you will see four options, marked a to d. Choose the best answer for · on the basis of what is implied in the passages. Then, mark your answer on your answer sheet.

(1)

According to this passage and Table 5.1, in the dictogloss activity.

- a students need to be made aware not only of the language form but also of the content
- b it is important how accurately students can reconstruct the text through group work
- c it is better not to let students predict the content before listening to the text
- d teachers should encourage students to take as many notes as possible

(2)

According to this passage and Figure 2.3,

㊦

.

- a a series of links is sometimes created by a different procedure than the one shown in the figure, for example, in the reverse direction
- b following the consequences, we make decisions based on the interpretations about students' language ability
- c the most important factor in assessing student performance is the interpretations derived from the assessment records
- d to use a language assessment, we need to relate students' assessment performance to the information-based outcomes we seek

【選択問題 中学校・高等学校】

第5問

Directions: You will read a passage. Beneath the passage, you will see five incomplete statements and four options, marked a to d. Choose the best option for ~ on the basis of what is stated or implied in the passage. Then, mark your answer on your answer sheet.

(1) According to the passage, .

- a the materials of the clothes in the warehouse have not been changing
- b the warehouse was used to make clothes for the Victorian aristocracy
- c there is a history of diamonds being found in the warehouse
- d the warehouse serves the same function now as it did a century ago

(2) According to the passage, Kirsi Niinimäki and her paper do NOT say that .

- a abandoning the fast-fashion model will help stabilize the fashion industry
- b the fast-fashion model will cease to work from a business perspective
- c the fast-fashion model is associated with impulse purchases
- d the average American consumers buy and discard clothes at about the same rate

(3) According to the passage, .

- a the number of times a clothing item is worn has been increasing markedly in developed countries
- b the consumption pattern of clothing for many Westerners influenced by the fast-fashion model is spreading throughout the world
- c a campaign to promote the reuse of inexpensive clothing is spreading, especially in developing countries
- d the spread of fast fashion has increased the production of clothing and raised the wages of those working for manufacturers

(4) According to the passage, .

- a it is considered that the linear model used by the fashion industry is sustainable
- b the support of the UN revealed the environmental footprint of the fashion industry
- c the fashion industry does not underestimate the environmental impact of fast fashion
- d the fashion industry stands up to the opinion that fast fashion harms the environment

(5) The most appropriate headline for the passage would be .

- a “Fast fashion is harming the planet”
- b “Fast fashion is perishing from the globe”
- c “Fast fashion is benefiting the earth”
- d “Fast fashion is spoiling humanity”

【選択問題 特別支援学校】

第5問 次の1～4の問いに答えなさい。

1 次の表は、令和4年12月13日に文部科学省により示された「通常の学級に在籍する特別な教育的支援を必要とする児童生徒に関する調査結果について」に関するものである。

(1) 小学校・中学校の「学習面又は行動面で著しい困難を示す」児童生徒の割合として、に当てはまる正しい数値を、下のa～eから一つ選びなさい。

<小学校・中学校>

	推定値
学習面又は行動面で著しい困難を示す	<input type="text" value="ア"/> %

a 4.6 b 6.5 c 7.3 d 8.8 e 10.3

(2) 学校種別ごとの「学習面又は行動面で著しい困難を示す」児童生徒の割合として、～に当てはまる正しい数値を、下のa～eから一つ選びなさい。

	推定値			
	学習面又は行動面で著しい困難を示す	A	B	C
小学校	<input type="text" value="イ"/> %	7.8%	4.7%	2.0%
中学校	<input type="text" value="ウ"/> %	3.7%	2.6%	1.1%
高等学校	<input type="text" value="エ"/> %	1.3%	1.0%	0.5%

※ A：「学習面で著しい困難を示す」、B：「不注意」又は「多動性－衝動性」の問題を著しく示す、C：「対人関係やこだわり等」の問題を著しく示す」

a 0.9 b 2.2 c 5.6 d 8.2 e 10.4

- 2 次の文は、令和5年3月に文部科学省より示された「通常の学級に在籍する障害のある児童生徒への支援に係る方策について（通知）」の一部である。文中の ～ に当てはまる語句を、下の a～d からそれぞれ一つ選びなさい。

この度、文部科学省の下に設置された「通常の学級に在籍する障害のある児童生徒への支援の在り方に関する検討会議」において、令和5年3月13日に報告が取りまとめられました。

(中略)

具体的には、

- ・ 校長のリーダーシップの下、特別な教育的支援を必要とする児童生徒の実態を適切に把握し、適切な指導や必要な支援を組織的に行うための を充実させること
- ・ 児童生徒が慣れた環境で安心して通級による指導を受けられるように や巡回指導をはじめとする通級による指導を充実させること
- ・ 通級による指導を担当する教師等の専門性の向上を図ること
- ・ 高等学校における通級による指導の実施体制を充実させること
- ・ 特別支援教育に関する専門的な知見や経験等を有する特別支援学校における小中高等学校等への指導助言等の を充実させること
- ・ よりインクルーシブで多様な教育的ニーズに柔軟に対応するため、特別支援学校を含めた2校以上の学校を一体的に運営するインクルーシブな学校運営モデルを創設すること

などについて提言されています。

- | | |
|-----------|-----------------|
| a 多様な学びの場 | b カリキュラム・マネジメント |
| c 学校運営協議会 | d 校内支援体制 |

- | | |
|-----------|--------|
| a グループ別指導 | b 自校通級 |
| c 他校通級 | d 個別指導 |

- | | |
|-------------|-----------|
| a カウンセリング機能 | b 一貫した支援 |
| c 継続的な支援 | d センターの機能 |

- 3 次の文は、特別支援学校学習指導要領解説（平成30年3月）各教科等編（小学部・中学部）第4章 知的障害者である児童生徒に対する教育を行う特別支援学校の各教科 第2節 知的障害者である児童生徒に対する教育を行う特別支援学校における指導の特徴について 3 指導の形態についての記述の一部である。文中の ～ に該当する語句を、下の a～d からそれぞれ一つ選びなさい。

知的障害者である児童生徒に対する教育を行う特別支援学校においては、児童生徒の学校での生活を基盤として、 の流れに即して学んでいくことが効果的であることから、従前から、日常生活の指導、遊びの指導、生活単元学習、作業学習などとして実践されてきており、それらは「各教科等を合わせた指導」と呼ばれている。

各教科等を合わせて指導を行うことに係る法的な根拠は、 第130条第2項に、特別支援学校において「知的障害者である児童若しくは生徒又は複数の種類の障害を併せ有する児童若しくは生徒を教育する場合において特に必要があるときは、各教科、道徳科、、特別活動及び自立活動の について、合わせて授業を行うことができる」とされていることである。

- a 発達や指導 b 興味や関心 c 学習や生活
d 指導計画や内容

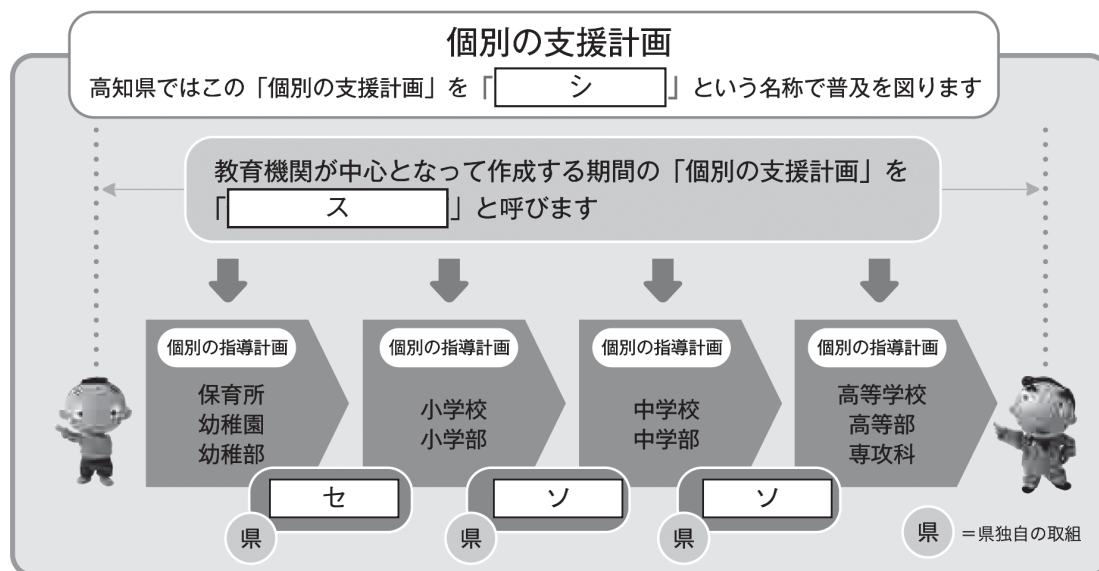
- a 教育基本法 b 地方公務員法 c 学校教育法施行令
d 学校教育法施行規則

- a 外国語活動 b 学級活動 c 総合的な学習の時間
d 総合的な探究の時間

- a 全部又は一部 b 全部 c 一部
d 特に示す部分

- 4 高知県教育委員会で作成した「高知県の特別支援教育 すべての子どもが輝くために」では、特別な支援を必要とする子どもたちへの切れ目のない支援を実現する仕組みとして次の図を示している。

図中の ～ に当てはまる語句を、下の1～7から一つずつ選びなさい。



- | | | |
|-------------|--------------|--------------|
| 1 個別の教育支援計画 | 2 個別の移行支援計画 | 3 アセスメントシート |
| 4 つながるノート | 5 就学時引き継ぎシート | 6 キャリア・パスポート |
| 7 支援引き継ぎシート | | |

